

# Vapor Pressure of Petroleum Products and LP Gases

## Vapor Pressure of Petroleum Products (Reid Method) and Liquefied Petroleum Gases (LPG Method)

### test method

Vapor pressure is a critical factor in the handling and performance of liquid petroleum and liquefied petroleum gas (LPG) products. The vapor pressure of automotive gasolines is subject to governmental regulation for pollution control purposes.

### Reid vapor pressure cylinders

- Conform to ASTM D323, D1267 and related specifications
- One-opening and two-opening types

Polished stainless steel test cylinders for vapor pressure tests of liquid petroleum products, volatile crude oil and liquefied petroleum gas (LPG). Consists of upper chamber and lower chamber in required 4:1 volume ratio. O-ring gaskets provide tight seal between chambers and at gauge coupling. One-opening type is for gasoline and other products having a Reid Vapor Pressure below 26psi (180kPa). Two-opening type is for liquid products having a Reid Vapor Pressure above 26psi (ASTM D323) and for LPG (ASTM D1267). Lower chamber of two-opening apparatus includes straight-through ball valve and 1/4" needle valve. For LPG testing, order two-opening type apparatus and accessory bleeder valve assembly.

### specifications

Conforms to the specifications of: ASTM D323, D1267; GPA 2140; IP 69, 161, 410; ISO 3007, 4256; DIN 51616, 51754; FTM 791-1201 Hydrostatic Test (two-opening type): Withstands 1000psi (6894kPa) gauge hydrostatic pressure per ASTM D1267 specifications

#### Included Accessories:

Threaded 1/4" Gauge Coupling  
O-ring Seals (2)

#### Shipping Information:

Shipping Weight: 7 lbs (3.2kg)



311-060-002 RVP Gauge

### ordering information

#### catalog no. description

|        |   |
|--------|---|
| K11500 | Reid Vapor Pressure Cylinder, One-Opening Type                |
| K11201 | Reid Vapor Pressure Cylinder Two-Opening Type                 |
| K11202 | Bleeder Valve Assembly for LPG tests for K11201 test cylinder |



K11500

K11201

### Reid vapor pressure gauges

- Conforming to ASTM D323, D1267 and related specifications
- Dual psi/kPa scale on a 4 1/2" diameter dial
- Accurate to within 0.5% of scale range
- Micrometer adjustable pointer

Ruggedly constructed Bourdon type gauge designed especially for the Reid Vapor Pressure test. Heavy duty rotary brushed stainless steel movement. Lightweight aluminum case with corrosion-resistant finish and heavy duty brass nonsparking handle. Includes blow-out disc and 1/4" NPT male thread connection.

### ordering information

| Catalog No. | Range psi/kPa | Figure Intervals psi/kPa | Interval Graduations psi/kPa |
|-------------|---------------|--------------------------|------------------------------|
| 311-005-004 | 0-5/35        | 0.5/5                    | 0.05/0.2                     |
| 311-015-002 | 0-15/100      | 1.0/10                   | 0.1/1.0                      |
| 311-030-002 | 0-30/200      | 5.0/20                   | 0.5/2.0                      |
| 311-060-002 | 0-60/400      | 5.0/50                   | 0.2/2.5                      |
| 311-100-002 | 0-100/700     | 10/50                    | 0.5/2.5                      |
| 311-250-001 | 0-250/1750    | 25/100                   | 1.0/20                       |
| 311-600-003 | 0-600/4200    | 50/250                   | 2.0/2                        |

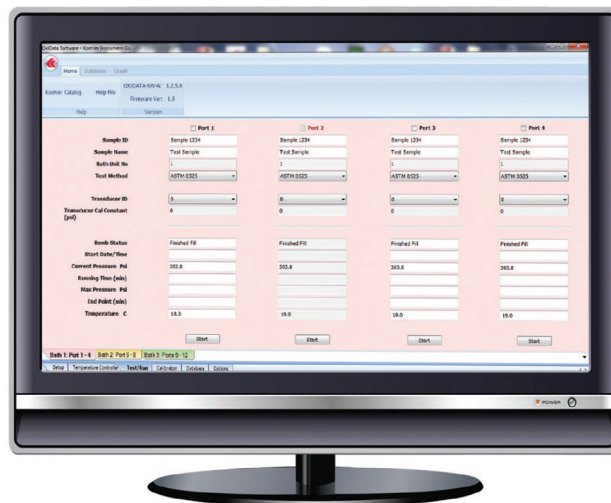
# Vapor Pressure of Petroleum Products and LP Gases

## wireless Reid vapor pressure data acquisition system

Windows®-based electronic pressure measurement software designed for ASTM Reid Vapor Pressure test methods. Monitors up to eight pressure vessel channels, graphing pressure and RVP data in real-time for each channel. Each channel can be run independently and configured for the pressure ranges of 0-50, 0-200, and 0-1000 psi. Pressure values can be reported in psi or kPa. Software automatically exports results into Microsoft® Excel for data analysis and storage.

## ordering information

| catalog no.        | description   | qty |
|--------------------|---|-----|
| <b>K11401</b>      | RVP Data Acquisition System, 115V 60 Hz   | 1   |
| <b>K11491</b>      | RVP Data Acquisition System, 230V 50/60 Hz<br>Includes software, multiplexer box, USB converter box and RTD temperature probe.<br><i>Requires one pressure transducer for each pressure vessel.</i> |     |
| <b>K11404-50</b>   | RVP Pressure Transducer, 0-50 psi   | 1-8 |
| <b>K11404-200</b>  | RVP Pressure Transducer, 0-200 psi  | 1-8 |
| <b>K11404-1000</b> | RVP Pressure Transducer, 0-1000 psi   | 1-8 |



Reid Vapor Pressure Data Acquisition System

## 4 unit Reid vapor pressure bath

- Conforms to ASTM D323, D1267 and related specifications
- Free standing or flush-mount benchtop installation
- Microprocessor programmable high accuracy temperature control

Constant temperature water baths designed for Reid Vapor Pressure determinations of liquid petroleum products and liquefied petroleum gases (LPG). Immerses vapor pressure apparatus at the proper depth per ASTM specifications. Controls bath temperature with  $\pm 0.2^{\circ}\text{F}$  ( $\pm 0.1^{\circ}\text{C}$ ) precision. Microprocessor PID control provides quick temperature stabilization without overshoot, and the bath is protected by an overtemperature control circuit that interrupts power should bath temperature exceed a programmed cut-off point. Dual LED displays provide actual and setpoint temperature values in  $^{\circ}\text{C}/^{\circ}\text{F}$  format. Double-wall construction with fiberglass insulated stainless steel tank. A sturdy 1" (25mm) flange permits flush-mount benchtop installation for easy access to the bath interior. Built-in holders suspend test cylinders at the required depth. Equipped with overflow stand pipe/drain.

## specifications

Conforms to the specifications of:

ASTM D323, D1267; GPA 2140; IP 69, 161; ISO 3007, 4256; DIN 51616, 51754; FTM 791-1201; NF M 07-007, 41-010  
Capacity: 1 to 4 vapor pressure apparatus, one- or two-opening type  
Temperature Control Stability:  $\pm 0.2^{\circ}\text{F}$  ( $\pm 0.1^{\circ}\text{C}$ )  
Maximum Temperature:  $212^{\circ}\text{F}$  ( $100^{\circ}\text{C}$ )  
Bath Medium: 13.7 gal (51.9L) water

### Electrical Requirements:

115V 60Hz, Single Phase, 18.8A    220-240V 50/60Hz, Single Phase, 9.4A

### Dimensions l x w x h, in.(cm)

15x15x36 (38.1x38.1x91.5)

Net Weight: 67 lbs (30.4kg)

### Shipping Information

Shipping Weight: 105 lbs (47.7kg)

Dimensions: 14 Cu. ft.

## ordering information

| catalog no.   | description  |
|---------------|--|
| <b>K11450</b> | Reid Vapor Pressure Bath, 4-Unit, 115V 60Hz        |
| <b>K11459</b> | Reid Vapor Pressure Bath, 4-Unit, 220-240V 50/60Hz |

## 21-Unit Reid vapor pressure bath

- Conforms to ASTM D323, 1267 and related specifications
  - Digital electronic temperature control
  - Automatic water level control maintains proper immersion depth
- Constant temperature water bath immerses twenty-one test cylinders for vapor pressure tests on liquid products and liquefied petroleum gas (LPG). Electronic level control automatically maintains the proper immersion depth per ASTM specifications. Heating system employs a 6kW stainless steel heat exchanger with a heavy duty circulating pump to provide rapid heat-up, even heat distribution and ease of servicing. Convenient digital setpoint and display permits rapid selection of any bath liquid temperature within the operating range. A built-in overtemperature limit control protects against accidental overheating. Bath interior and internal components are constructed of heavy gauge stainless steel. Control panel is shielded by a hinged acrylic cover. Includes sturdy angle-iron base with corrosion resistant polyurethane finish. Order pressure gauges and cylinders separately.

## specifications

Conforms to the specifications of: ASTM D323, D1267; GPA 2140; IP 69, 161, 410; ISO 3007, 4256; DIN 51616, 51754; FTM 791-1201  
Testing Capacity: 21 vapor pressure test cylinders  
Temperature Range:  $212^{\circ}\text{F}$  ( $100^{\circ}\text{C}$ )  
Temperature Control Stability:  $\pm 0.2^{\circ}\text{F}$  ( $\pm 0.1^{\circ}\text{C}$ )  
Heater Range: 0-6000W  
Bath Medium: 58 gal (219.5L) water

### Electrical Requirements:

220-240V 50Hz, Single Phase, 28A

220-240V 60Hz, Single Phase, 28A

### Dimensions l x w x h, in.(cm)

Overall: 48x22x36 (122x56x91)

## ordering information

| catalog no.   | description                                      |
|---------------|--|
| <b>K11415</b> | Reid Vapor Pressure Bath, 21-Unit, 220-240V 50Hz |
| <b>K11416</b> | Reid Vapor Pressure Bath, 21-Unit, 220-240V 60Hz |

# Vapor Pressure of Petroleum Products and LP Gases



**K11450 Reid Vapor  
Pressure Bath**

Test apparatus for liquid products (ASTM D323) requires:

Test Cylinders, one or two-opening type  
Pressure Gauges  
Constant Temperature Bath  
Bath Thermometer  
Sample Container with Cover Assembly  
Transfer Connection  
Manometer  
Manometer Adapter Kit

*On-line version of this product is available. Please contact Koehler  
Customer Service for additional information*

## ordering information

| catalog no.         | description  |
|---------------------|--|
| <b>250-000-18F</b>  | ASTM 18F Thermometer Range: 94 to 108°F  |
| <b>250-000-18C</b>  | ASTM 18C Thermometer Range: 34 to 42°C   |
| <b>250-000-65F</b>  | ASTM 65F Thermometer Range: 122 to 176°F   |
| <b>250-000-65C</b>  | ASTM 65C Thermometer Range: 50 to 80°C   |
| <b>K11800</b>       | Sample Container with Cover Assembly   |
| <b>K11810</b>       | Transfer Connection<br>Consists of threaded brass cap, delivery tube and sampling tube. Use for removing liquid from the sample container in accordance with ASTM specifications |
| <b>371-000-002</b>  | Liquid Manometer Graduated in inches (0.1" div.).<br>For checking pressure gauge reading of up to 15psi  |
| <b>K112B-1-0-12</b> | Manometer Adapter Kit<br>Kit for attaching pressure gauge to liquid manometer for pressure verification  |
| <b>AS568-210</b>    | O-ring Seal<br>For coupling between air and gas chambers on K11500 and K11201 vapor pressure bombs   |
| <b>AS568-113</b>    | O-ring Seal<br>For gauge and bleeder valve assembly connections on K11500 and K11201 vapor pressure bombs  |
| <b>K40100</b>       | Flexible Tubing<br>Sulfur-free plastic lined tubing with 1/4" stainless steel and aluminum connectors. For charging LPG test cylinder.   |

Test apparatus for liquefied petroleum gases (ASTM D1267) requires:

Test Cylinders, two-opening type  
Bleeder Valve Assemblies  
Pressure Gauges  
Constant Temperature Bath  
Bath Thermometer  
Flexible Tubing  
Manometer  
Manometer Adapter Kit